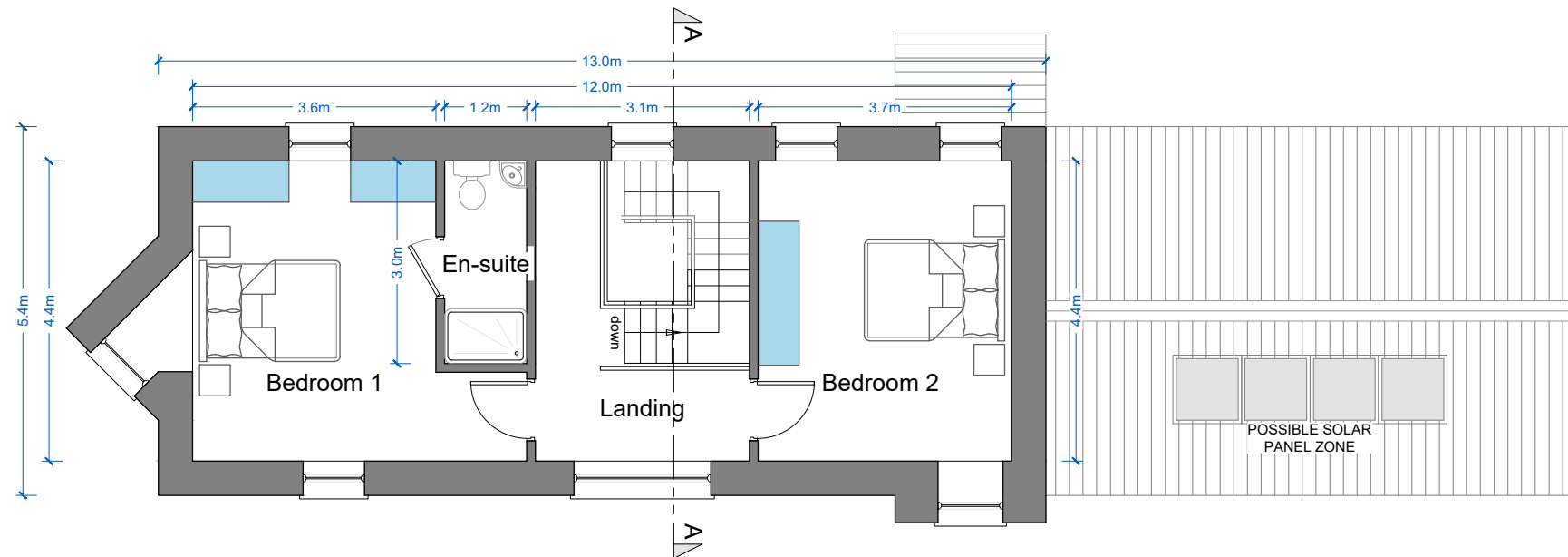


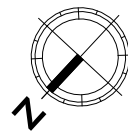
All dimensions to be checked on site. Figured dimensions take preference over scaled dimensions. Any errors or discrepancies to be reported to the Architects. This drawing may not be edited or modified by the recipient.

"Copyright and ownership of this drawing is vested in STRUTEC, whose prior written consent is required for its use, reproduction or for publication to any third party. All rights reserved by the law of copyright and by international copyright conventions are reserved to STRUTEC and may be protected by court proceedings for damages and/or injunctions and costs."



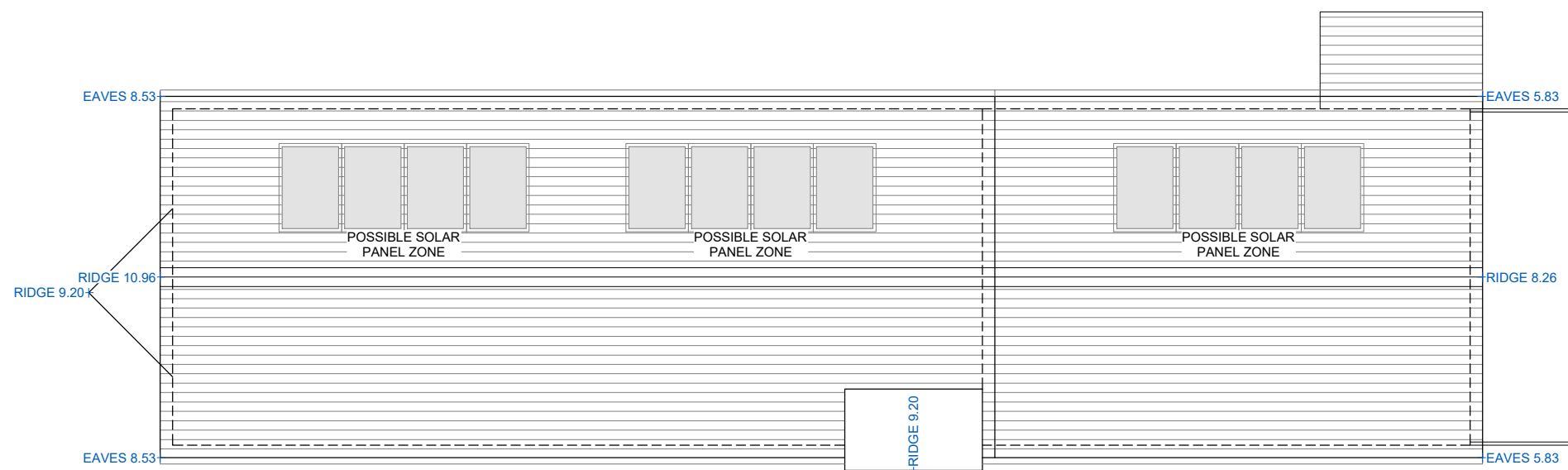
SECOND FLOOR PLAN  
SCALE 1:100

APARTMENT 2: 3-BED DUPLEX  
FLOOR AREA UPPER STOREY 52.3m<sup>2</sup>



### NOTE

LEVELS, ORIENTATION AND SITUATION (E.G. DETACHED, SEMI-DETACHED OR TERRACED) VARY PER UNIT. REFER TO SITE PLAN FOR LEVELS, ORIENTATION AND SITE CONTEXT INFORMATION.



ROOF PLAN  
SCALE 1:100

#### FINISHES:

##### ROOF:

- FIBRE CEMENT SLATES OR SIMILAR IN SELECTED COLOURS.
- uPVC/ALUMINIUM FASCIAS, SOFFITS AND RAINWATER GOODS OR SIMILAR IN SELECTED COLOURS.

##### WALLS:

- EXTERNAL WALLS TO BE GENERALLY BRICK AND RENDERED IN SELECTED COLOURS. RED/BROWN BRICK GENERALLY WITH CHARCOAL BRICK TO EXTERNAL STAIRS.
- ZINC CLADDING TO SELECTED AREAS WHERE INDICATED.

#### DOORS AND WINDOWS:

- ALL FRONT ENTRANCE DOORS TO BE HARDWOOD OR SIMILAR, IN SELECTED COLOURS.
- OTHER DOORS AND WINDOWS TO BE T/G uPVC OR SIMILAR IN SELECTED COLOURS.
- STONE-EFFECT WINDOW/DOOR SURROUNDS/HEADS IN SELECTED SANDSTONE COLOURS WHERE INDICATED. CILLS TO MATCH.
- RED/BROWN BRICK WINDOW/DOOR SURROUNDS/HEADS WHERE INDICATED.

#### BALUSTRADES:

- TO STAIRS - METAL HANDRAIL TO PARTS K AND M ON METAL BALUSTERS AND WALLS FINISHED AS SHOWN IN SELECTED COLOUR.

REV	DATE	REV BY	DESCRIPTION
-	-	-	-
STATUS <b>PLANNING</b>			
PROJECT <b>CREAGH STRATEGIC HOUSING RESIDENTIAL DEVELOPMENT</b>			
PROJECT ADDRESS <b>BALLOWEN/RAMSFORTPARK, GOREY, CO. WEXFORD</b>			
DWG TITLE <b>APARTMENT BLOCK TYPE F PLANS</b>			
DWG NO <b>PL2-251</b>			REV <b>-</b>
JOB NO <b>1725</b>		SCALE @ A3 <b>1:100</b>	
DATE <b>30.11.2018</b>		DRN <b>Liam Minogue</b>	
 <b>STRUTEC</b> Architects - Engineers - Project Managers			STRUTEC, Architectural & Engineering Consultants, Garryhill, Bagenalstown, Co. Carlow, R2 KP44 Ireland Tel +353 (0)59 97 27623 W www.strutec.ie E info@strutec.ie